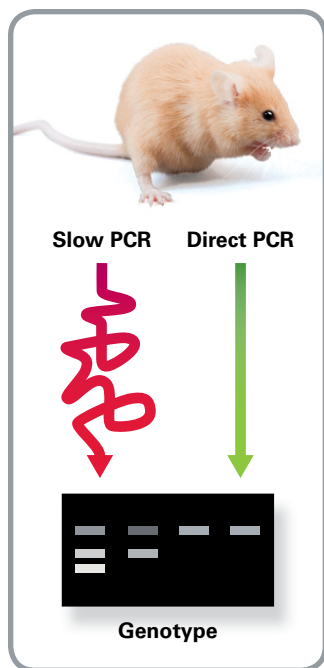


Terra™ PCR Direct

Add tissues directly into the PCR reaction!

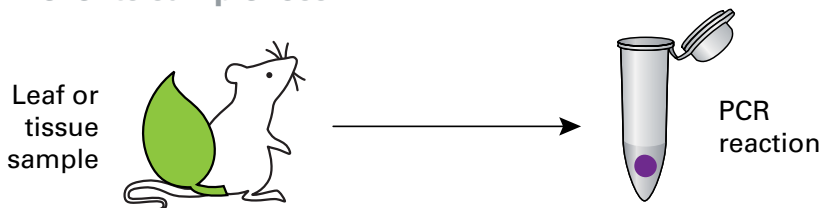


Visit our website 

Benefits of Direct PCR

Direct PCR allows for genome amplification directly from a crude extract or a small tissue sample, without the need for DNA purification. Add your sample directly into the PCR reaction vial!

- ✓ No DNA purification
- ✓ Easy protocol with fewer steps
- ✓ Saves time and money
- ✓ Requires very little sample
- ✓ Prevents sample loss



Terra PCR Direct

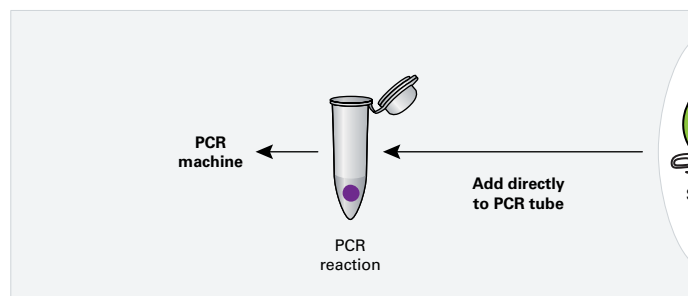
Terra PCR Direct mixes and kits are optimized for direct PCR and allow amplification from a large variety of tissue sources.

- Feature a novel non-*Taq* DNA polymerase designed for direct PCR
- Amplify templates up to 2 kb and > 70% GC-content
- Include hot-start antibody for enhanced specificity
- Compatible with one-step and two-step direct PCR protocols

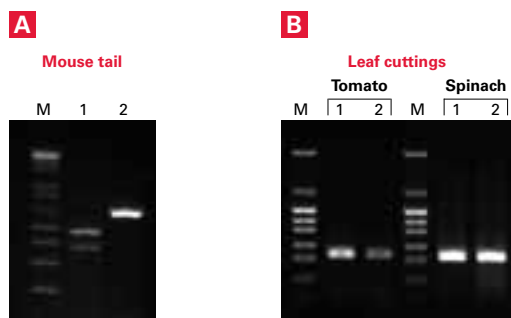
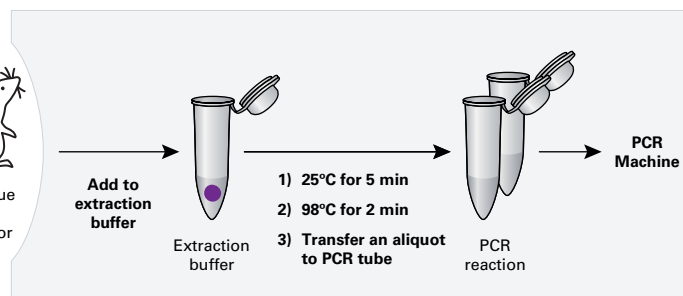
Genomes Amplified Using Terra PCR Direct

Human	Cow	<i>Arabidopsis</i>	<i>H. pylori</i>
Mouse	Sheep	Sugar cane	<i>Bacillus</i>
<i>Drosophila</i>	Chicken	Cotton	<i>Fusarium</i>
<i>C. elegans</i>	Lamb	Soybean	Moss sporophytes
<i>Xenopus</i>	Pig	Mosquito	Chestnut
Yeast/Mycelia	Corn	<i>Trichogramma</i>	Arugula
Zebrafish	Rice	Dragonfly	

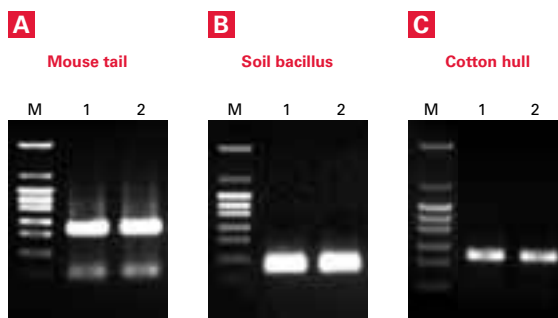
Terra PCR Direct: One-Step Protocol



Terra PCR Direct: Two-Step Protocol



One-step direct PCR. This fast protocol allows for a single experiment and is ideal when resources are limited. Solid samples were amplified using the Terra PCR Direct Polymerase Mix. **Panel A.** NF1 flox (Lane 1) and Cre (Lane 2) bands from 0.5 mm tail (Data courtesy of Dr. Fe Du, UCSD). **Panel B.** 0.5 mm (Lane 1) and 1.2 mm (Lane 2) leaf punches.



Two-step direct PCR. Requires an initial dilution of the primary sample in extraction buffer. This allows for multiple experiments from one small sample, or long-term storage. Solid samples were amplified using the Terra PCR Direct Genotyping Kit. PCR was performed in duplicate (lanes 1–2).

Products

Cat. #	Product	Description	Package Size
Terra PCR Direct Products for Use with either the One-Step or Two-Step Protocols			
639269	Terra PCR Direct	Use with tissues & crude extracts. Includes polymerase mix & 2X buffer (with Mg ²⁺ , dNTPs).	40 rxns
639270	Polymerase Mix		200 rxns
639271			800 rxns
639286	Terra PCR Direct Red Dye Premix	The above in a convenient 2X master mix format. Includes polymerase mix, buffer, Mg ²⁺ , dNTPs, & loading dye.	200 rxns
639287	Terra PCR Direct Card Kit	Use for blood, buccal samples, & plant material preserved on Whatman FTA cards. Includes polymerase mix, & 2X buffer (with Mg ²⁺ , dNTPs).	200 rxns
Terra PCR Direct Products for Use with the Two-Step Protocol			
639285	Terra PCR Direct Genotyping Kit	The complete genotyping kit for plant and animal tissues. Includes polymerase mix, 2X buffer (with Mg ²⁺ , dNTPs), tissue extraction buffer, proteinase K, & 5X loading dye.	200 rxns
639284	Terra PCR Direct FFPE Kit	Use for paraffin-embedded tissues (skip deparaffinization). Includes polymerase mix, 2X buffer (with Mg ²⁺ , dNTPs), DNA recovery buffer, & proteinase K.	200 rxns
638323	Terra qPCR Direct	For real-time PCR from cell lysates & crude extracts. Pre-mix includes polymerase mix, buffer, Mg ²⁺ , dNTPs, & SYBR Green I dye. Kit includes two ROX reference dyes.	40 rxns
638319	SYBR® Premix		200 rxns
638318			400 rxns

Package size based on 50 µl PCR reactions.

Notice to Purchaser

Your use of these products and technologies is subject to compliance with any applicable licensing requirements described on the product's web page at <http://www.clontech.com>. It is your responsibility to review, understand and adhere to any restrictions imposed by such statements.