

**BMA**

가 !

Ready-made agarose gel

## Precast Gel Series

**Reliant® Gel System****20****【1 × 8 well type】**

Reliant BMA

agarose ready - made type  
DNA agarose mini gel . Gel

TaKaRa  
Code

background가

1% SeaKem® Gold (1 × TAE  
Buffer)

F54801

4% NuSieve® 3:1 (1 × TAE  
Buffer)

F54924

1% SeaKem® Gold (1 × TBE  
Buffer)

F54901

: 6.8 × 10.2 cm\*

Gel : 6.0 × 9.5 cm\*

4% NuSieve® 3:1 (1 × TBE Buffer)

F54926

:

1% SeaKem® Gold : 300 bp~8 kb

1% SeaKem® Gold (1 × TAE  
Buffer, EtBr )

F54803

2% SeaKem® Gold : 100 bp~2 kb

4% NuSieve® 3:1 (1 × TAE  
Buffer, EtBr )

F54925

4% NuSieve® 3:1 : 8 bp~1 kb

1% SeaKem® Gold (1 × TBE  
Buffer, EtBr )

F54903

: 15 µl/well

\* ( ) × (well  
Mupid4% NuSieve® 3:1 (1 × TBE  
Buffer, EtBr )

F54927

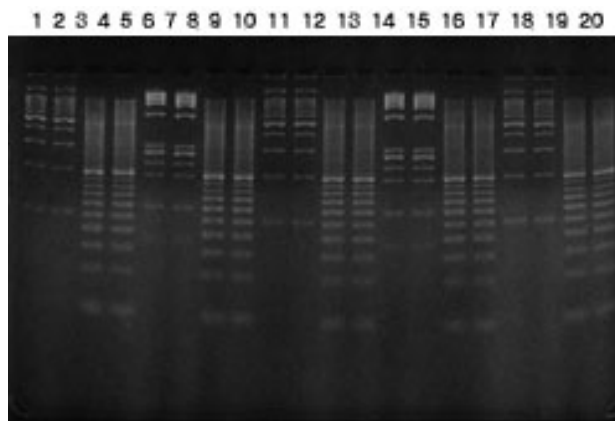
(CosmoBio ) 6 .

**【20 well type】****【2 × 12 well type】**TaKaRa  
CodeTaKaRa  
Code

1% SeaKem® Gold(1 × TBE Buffer)	F54943
2% SeaKem® Gold(1 × TBE Buffer)	F54938
4% NuSieve® 3:1(1 × TBE Buffer)	F54944
1% SeaKem® Gold(1 × TBE Buffer, EtBr )	F54907
2% SeaKem® Gold(1 × TBE Buffer, EtBr )	F54939
4% NuSieve® 3:1(1 × TBE Buffer, EtBr )	F54908

1% SeaKem® Gold (1 × TBE Buffer)	F54936
2% SeaKem® Gold (1 × TBE Buffer)	F54940
4% NuSieve® 3:1 (1 × TBE Buffer)	F54937
1% SeaKem® Gold (1 × TBE Buffer, EtBr )	F54905
4% NuSieve® 3:1 (1 × TBE Buffer, EtBr )	F54929

가 6.8 cm(well )  
 × 10.2 cm( ) 6  
 (20 well type) 가 . 가 .



1  
 Gel : 4% NuSieve® 3:1, TBE Buffer  
 (TaKaRa Code F54908)  
 lane 1, 2, 9, 10, 17, 18 : 100 bp DNA Ladder : 200 ng/lane  
 lane 3, 4, 7, 8, 11, 12, 15, 16, 19, 20 : 20 bp DNA Ladder : 400 ng/lane  
 lane 5, 6, 13, 14 : øX174 - Hae III digest : 175 ng/lane  
 : 100 V, 30 ( gel )

1 2 ( )

다카라코리아바이오메디칼주식회사

## BMA

- 가 !
- Ready-made agarose gel

## Precast Gel Series

### Latitude™ precast agarose midigels 8

Latitude BMA .  
 20~40  
 agarose . 40  
 background가  
 . loading 8 , 12  
 multi channel pipet .

Gel :  
 15 x 10 cm( x well )  
 :  
 1% SeaKem® LE : 400 bp~10 kb  
 2% SeaKem® LE : 100 bp~3 kb  
 4% NuSieve® 3:1 : 20 bp~1 kb  
 : 10~12  $\mu\text{l}$ /well

EtBr

TaKaRa  
Code

1% SeaKem® LE (20 well, 1 x TAE Buffer)	F57200
2% SeaKem® LE (20 well, 1 x TAE Buffer)	F57201
4% NuSieve® 3:1 (20 well, 1 x TAE Buffer)	F57202
1% SeaKem® LE (2 x 20 well, 1 x TAE Buffer)	F57210

### Latitude™ HT series precast gels 5

Latitude BMA .  
 agarose gel . 100  
 가 가  
 . loading 12  
 multi channel pipet .

:  
 15 x 25 cm( x well )  
 Gel : 14 x 24 cm  
 :  
 1% SeaKem® LE : 400 bp~10 kb  
 2% SeaKem® LE : 100 bp~3 kb  
 4% NuSieve® 3:1 : 20 bp~1 kb  
 : 10~12  $\mu\text{l}$ /well

EtBr

TaKaRa  
Code

1% SeaKem® LE (2 x 50 well, 1 x TAE Buffer)	F57204
2% SeaKem® LE (2 x 50 well, 1 x TAE Buffer)	F57206
4% NuSieve® 3:1 (2 x 50 well, 1 x TAE Buffer)	F57205

2% SeaKem® LE (2 x 20 well,  
1 x TAE Buffer) F57211  
4% NuSieve® 3:1 (2 x 20 well,  
1 x TAE Buffer) F57212

1% SeaKem® LE (4 x 50 well,  
1 x TAE Buffer) F57214  
2% SeaKem® LE (4 x 50 well,  
1 x TAE Buffer) F57216  
4% NuSieve® 3:1 (4 x 50 well,  
1 x TAE Buffer) F57215

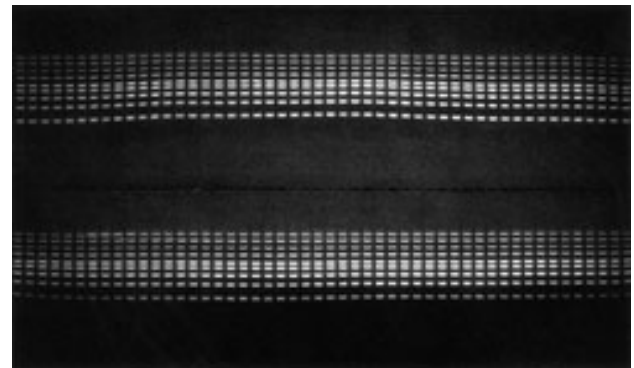
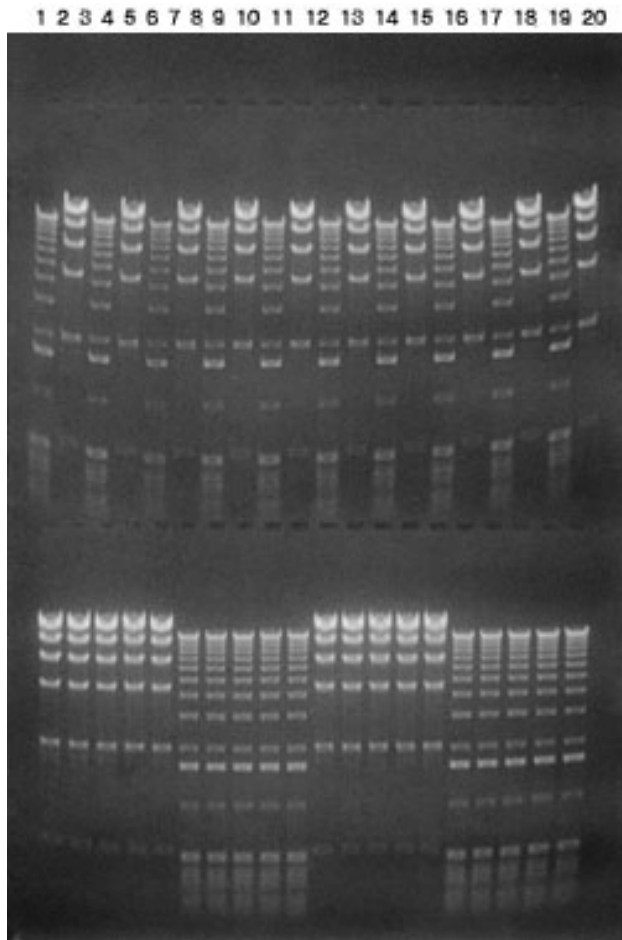
TBE buffer

TBE Buffer

BioRad

Sub Cell Model

96/192



3

gel : 1% SeaKem® LE, TAE Buffer  
(TaKaRa Code F57204)  
: 1 - 10 kb Marker ; 2 µl/lane  
: 150 V, 40 ( )  
gel ( )  
: Owl Centipede

[ ]  
Latitude precast agarose midigels

2

Gel :

1% SeaKem® LE TAE Buffer (TaKaRa Code  
F57210)  
lane ( ) lane  
( ) 1~5, 11~15  
- Hind III digest : 200 ng/lane  
lane ( ) lane  
( ) 6~10, 16~20  
1 kb DNA Marker : 200 ng/lane  
: 100 V, 40

Latitude™ midigel chamber

TaKaRa Code F56690 1



1 2

( )

---

**다카라코리아바이오메디칼주식회사**